

# Hybrid Solar Inverter NX Series



## Intelligent Control

Five smart control mode, auto switch for different demand

RS485 communicational portal, for app & external screen control



## High Efficiency

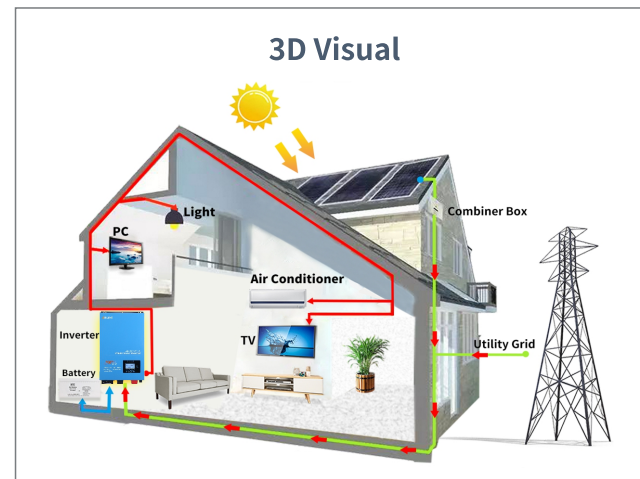
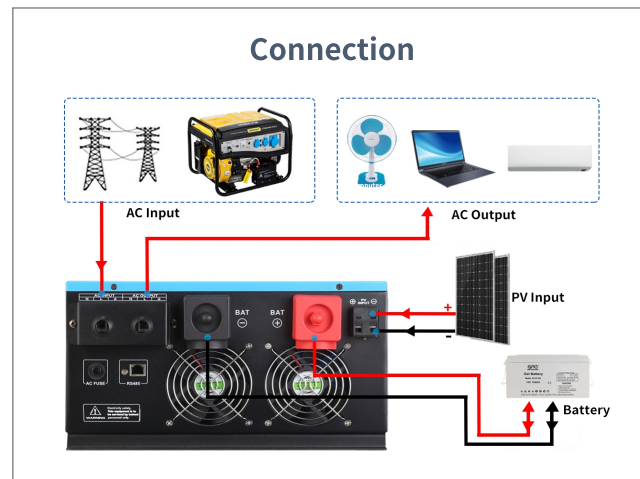
Inverter transfer efficiency up to 85%

Inbuilt 40/60/80A MPPT & 35A AC charger efficiency more than 99%



## Battery Type

Support SLA/GEL/AGM/lithium lifepo4 battery



# Technical Specification

Model	NX-152	NX-202	NX-302	NX-402	NX-502	NX-602
Rated power	1.5KW	2KW	3KW	4KW	5KW	6KW
Surge power	4.5KW	6KW	9KW	12KW	15KW	18KW
<b>AC Input &amp; Output</b>						
Voltage	220VAC					
Selectable Voltage Range	165-275VAC (220VAC)					
Frequency Range	50Hz/60Hz automatic recognition					
AC Voltage Regulation (BATT. Mode)	(DC Batt.mode)220vac ±3%					
Transfer Time	≤4ms					
Wave Form	Pure Sine Wave					
Transformer type	Toroidal					
Transfer efficiency	≥85%					
<b>Battery</b>						
Battery Voltage	12V/24V	24V	24V/48V			
Type	Gel/SLA/AGM/Water/Lithium(lifepo4) Battery					
DC Charge Voltage	12~16VDC(12V)/20~32VDC(24V)/40~64VDC(48V)					
Overcharge Protection	Battery voltage ≥16VDC (12V) ≥32VDC (24V) ≥64VDC (48V), stop charging after 60s alarm					
<b>Solar Charge &amp; Ac Charger</b>						
Maximum PVArray Open Circuit Voltage	150VDC					
Maximum Pv Array Power	570W(12V)/1130W(24V)	1130W(24V)	1700W(24V)/3400W(48V)	2260W(24V)/4540W(48V)		
Maximum Ac Charge Current	35A(adjustable)					
Maximum Solar Charge Current	40A MPPT		60A MPPT		80A MPPT	
Maximum Charging Current	75A		95A		115A	
<b>Working mode</b>						
01 mode	AC mains priority mode					
02 mode	ECO mode					
03 mode	DC battery priority mode					
04 mode	Generator mode					
05 mode	Unattended mode					
<b>Communication Port</b>						
Type	RS485, available for wifi box & external control screen					
<b>Physical</b>						
Dimension, D*W*H(MM)	560*350*220		640*420*260		680*445*260	
G.W.(KGS)	19.5	22	26	33	35.5	37
<b>Environment</b>						
Humidity	0~95% ( No condensation)					
Operating Temperature	0~60°C					
Storage Temperature	0~60°C					

\*Product Specifications Are Subject To Change Without Further Notice