

# Hybrid Solar Inverter HX Series



[ Remote control ]  
Sell seperately



### Intelligent Control

Five smart control mode, auto switch for different demand  
RS485 communicational portal, for app & external screen control



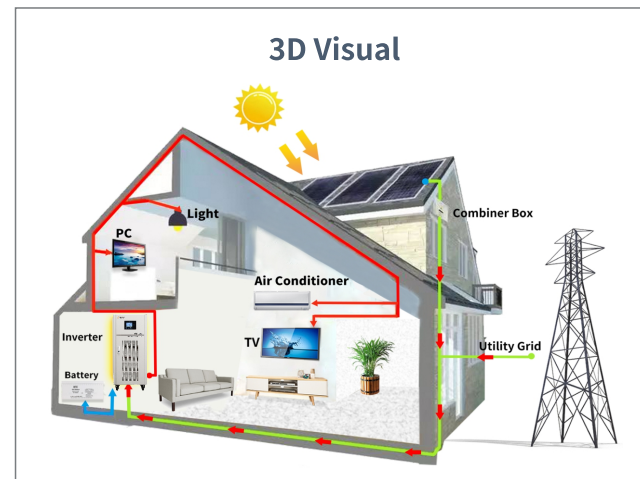
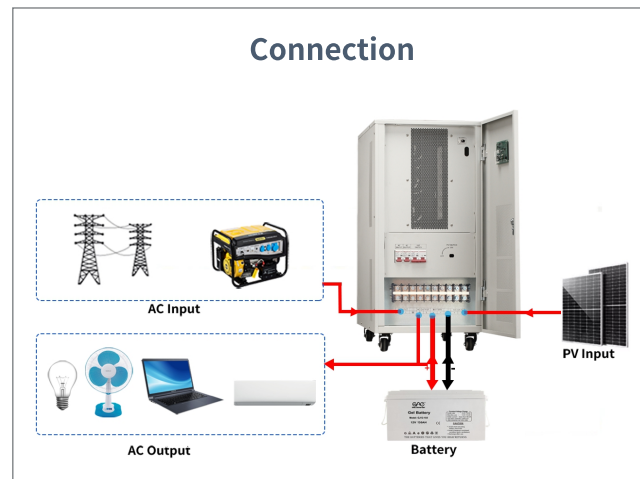
### High Efficiency

Inverter transfer efficiency up to 85%  
Inbuilt 20A AC & 100A MPPT charger efficiency more than 99%



### Battery Type

Support SLA/GEL/AGM/Lithium lifepo4 battery



# Technical Specification

Model	HX-153	HX-203	HX-303
Rated Power	15KW	20KW	30KW
Peak Power	45KW	60KW	90KW
Input & Output			
DC Input Voltage	192V		240V
DC Input Voltage Range	168-240VDC		210-300VDC
AC Input Voltage Range	170-275VAC		
AC Input Frequency	50Hz / 60Hz ±5Hz		
Efficiency	≥ 85%		
Output Voltage	(Inverter Mode) 220VAC ±3%		
Output Frequency	(Inverter Mode) 50Hz / 60Hz ±0.5Hz		
Output Wave form	Pure Sine Wave		
Battery			
Battery High Voltage Alarm	> 240VDC		> 300VDC
Battery Low Voltage alarm	< 168VDC		< 210VDC
Overload/High Temperature/Short Circuit Protection	Automatic Shut-down		
Other			
Switch time			≤ 8ms
Display	LCD		
Cooling System	Forced Air Cooling, Intelligent Speed Regulation		
Operating Mode	AC Input Priority Mode / Battery Priority Mode / ECO Mode / Generator Mode / Unattended Mode		
Communication	RS-485		
Charger			
Charging Mode	Constant Current/Floating Charge/MPPT		
MPPT Efficiency	≥96.5%		
Photovoltaic module efficiency	≤99%		
PV. Open Circuit Voltage	≤650V		
PV. Operating Voltage	≤550V		
Maximum Charging Current	100A		
Maximum Solar Input	22400W		28000W
Type Of Battery	SLA Battery / AGM Battery / Lithium(lifepo4) Battery		
AC Charging Current	20A		
Working Environment			
Temperature	0~55°C		
Humidity	0~95%(No Condensation)		
Measurement			
Product Size(mm)	760*460*1050		800*500*1100
N. W.(KGS)	140	148	161

\* Product specifications are subject to change without notice.