

# Hybrid Solar Inverter FSI Series



### Stable & Durable

Latest toroidal transformer could handle triple surge power.  
Inbuilt AVR stabilizer for stable output



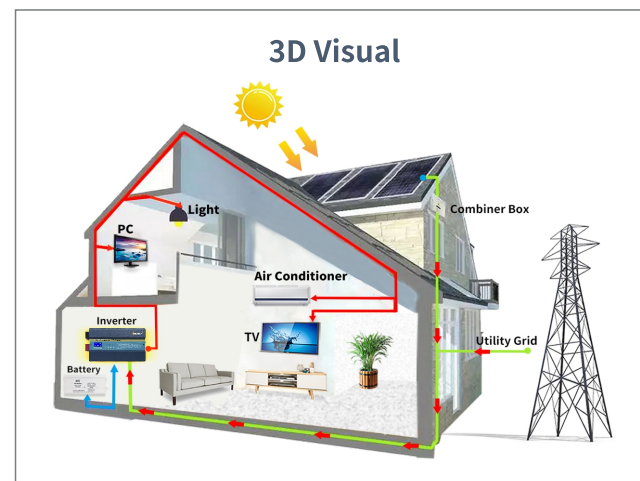
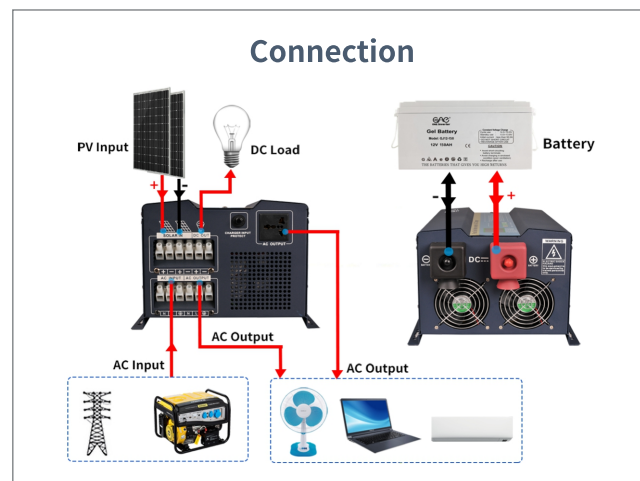
### High Efficiency

Inverter transfer efficiency up to 85%  
Inbuilt 30/50A MPPT & 35A AC charger efficiency more than 99%



### Battery Type

Support SLA/AGM/GEL battery



# Technical Specification

Model	FSI-152	FSI-202	FSI-302	FSI-402	FSI-502	FSI-602
Rated power	1.5KW	2KW	3KW	4KW	5KW	6KW
Surge power	4.5KW	6KW	9KW	12KW	15KW	18KW
AC Input & Output						
Voltage	220VAC					
Selectable Voltage Range	165-275VAC (220VAC)					
Frequency Range	50Hz/60Hz automatic recognition					
AC Voltage Regulation (BATT. Mode)	(DC Batt.mode)220vac±3%					
Transfer Time	≤4ms					
Wave Form	Pure Sine Wave					
Transformer type	Toroidal					
Transfer efficiency	≥85%					
Battery						
Battery Voltage	12V/24V/48V			24V/48V		
Type	Gel/SLA/AGM/Lithum battery					
DC Charge Voltage	13.6-14.2VDC(12V)/27.2-28.4VDC(24V)/54.4-56.8VDC(48V)					
Overcharge Protection	Battery voltage ≥16VDC (12V) ≥32VDC (24V) ≥64VDC (48V), stop charging after 60s alarm					
Solar Charge & Ac Charger						
Maximum PVArray Working Circuit Voltage	150VDC					
Maximum Pv Array Power	700W(12V)/1400W(24V)			1400W(24V)/2800W(48V)		
Maximum Ac Charge Current	35A (adjustable)					
Maximum Solar Charge Current	30/50AMPPT (OPTIONAL)			50A MPPT		
Maximum Charging Current	85A			85A		
Working mode						
01 mode	AC mains priority					
02 mode	Energy saving					
03 mode	DC battery priority					
Physical						
Dimension, D*W*H(MM)	530*355*260			740*355*275		
G.W.(KGS)	18	20	22	33	35	36
Environment						
Humidity	0~95% (NO CONDESNSATION)					
Operating Temperature	0~60℃					
Storage Temperature	0~60℃					

\*Product Specifications Are Subject To Change Without Further Notice